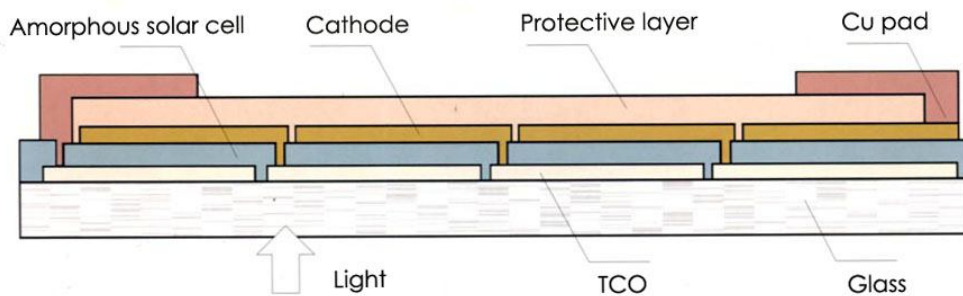


SOLUTION OF INDOOR SOLAR CELL APPLICATION

Amorphous silicon thin film cells are particularly suitable for indoor use. Our solar cells are widely used in many types of low power electronic devices, such as calculators and watches.

Our Company's cells are manufactured according to the specifications of the customer's application, which takes into consideration such factors as load resistance, voltage, electric current, etc.. When designing our cells, we work closely with our customers to ensure that all customer requirements and performance needs are met.

Structure of Amorphous Solar Cell



Externals Drawing of Amorphous Solar Cells



INDOOR SOLAR CELL APPLICATION:

Clock, Watch, indoor sensor, radio, flashlight, cell phone charger, charger, calculator, lamp, toy, electric thermometer and other small electronic products, etc.

SPECIFICATIONS OF STANDARD AMORPHOUS SILICON SOLAR CELLS

| Item No | Dimension | Open Circuit Voltage(V) | Short Circuit Current(mA) | Operating Voltage(V) | Operating Current(mA) | Illumination |
|-----------|---------------|-------------------------|---------------------------|----------------------|-----------------------|--------------|
| KS-2510 | 24.8*9.7*1.1 | 2.0V | 7uA | 1.5V | 5uA | 200LUX |
| KS-3012 | 29.5*11.6*1.1 | 2.0V | 10uA | 1.5V | 7uA | 200LUX |
| KS-3513-8 | 34.8*12.8*1.1 | 4.0V | 7uA | 2.0V | 5uA | 200LUX |
| KS-3514 | 34.7*13.6*1.1 | 2.0V | 14uA | 1.5V | 10uA | 200LUX |
| KS-3726 | 37*21.8*1.1 | 4.0V | 11uA | 3.0V | 8uA | 200LUX |
| KS-3722 | 37*21.8*1.1 | 4.5V | 10uA | 3.5V | 7uA | 200LUX |
| KS-3813 | 37.8*12.4*1.1 | 2.0V | 15uA | 1.5V | 11uA | 200LUX |
| KS-4045 | 44.5*39.5*1.1 | 4.0V | 25uA | 3.0V | 12.5uA | 200LUX |
| KS-5020 | 50*20*1.1 | 4.0V | 13uA | 3.0V | 10uA | 200LUX |
| KS-5514 | 54.8*13.5*1.1 | 2.0V | 18.5uA | 1.5V | 13.5uA | 200LUX |
| KS-5520 | 55*20*1.1 | 4.0V | 15 uA | 3.0V | 11uA | 200LUX |
| KS-5515 | 55*15.5*1.1 | 4.0V | 15uA | 3.0V | 11uA | 200LUX |
| KS-5528 | 55*28*1.1 | 2.0V | 40uA | 1.5V | 30uA | 200lux |
| KS-5540 | 55*40*1.1 | 4.0V | 28uA | 3.0V | 20uA | 200LUX |
| KS-5560 | 55.1*60.1*1.1 | 4.5V | 48uA | 3.3V | 26uA | 200LUX |
| KS-5649-9 | 56.1*48.6*1.1 | 4.5V | 31uA | 3.5V | 23uA | 200LUX |
| KS-5649-8 | 56.1*48.6*1.1 | 4.0V | 35uA | 3.0V | 24uA | 200LUX |
| KS-5832 | 58*32*1.1 | 2.0V | 46uA | 1.5V | 32uA | 200LUX |
| KS-7215 | 72*15*1.1 | 6V | 9uA | 4.5V | 6uA | 200LUX |
| KS-26101 | 26*101*1.1 | 6.5V | 26uA | 5.0V | 19.5uA | 200LUX |

Testing condition: Air Mass:AM1.5, Illuminance:≥200LUX, Temperature :25°C

Indoor "200LUX" means 6000K fluorescent spectrum

- Dimension tolerance ±0.2mm
- Operating temperature:-20°C to 65°C; Storage Temperature:-45°C to 85°C
- All specifications are subject to change for product improvement without notice.

Office Address:

N0.401,ZhongKang Pioneer Park,ZhongKang Road,
Futian District, ShenZhen City,Guangdong Province,China

Factory Address:

Longxi Hi-tech Industrial Park, Longcheng Road, Longgang
Town, ShenZhen City,Guangdong Province,China



CHINA SOLAR LTD

<http://www.solars-china.com>

<http://www.solars-china.net>

Tel: +86.755.8351 5659

Fax: +86.755.8271 6024

E-mail: market@solars-china.com

NOTE: The hereinbefore product datum and parameters is just to customers' reference.

The final technical files provided by CHINA SOLAR LTD. We also manufactures customized solar cells according to customer's specifications.

Amorphous Solar Cell Application Example



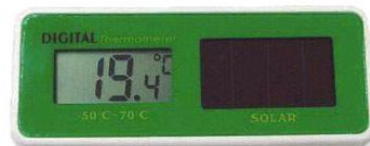
k



Sol



iles



Solar Calculator

Solar Flashlight

Solar Doll

Solar Watch

If you want to inquiry or place an order, Please send the inquiry or purchase order to us by email or fax, including model number, quantity and delivery address.



E-mail: market@solars-china.com

WEB: <http://www.solars-china.com>

Tel: +86 755 83515659

FAX: +86 755 82716024

Solar Technology Drives Your Life

Office Address:

N0.401, ZhongKang Pioneer Park, ZhongKang Road,
Futian District, ShenZhen City, Guangdong Province, China

Factory Address:

Longxi Hi-tech Industrial Park, Longcheng Road, Longgang
Town, ShenZhen City, Guangdong Province, China



CHINA SOLAR LTD

<http://www.solars-china.com>

<http://www.solars-china.net>

Tel: +86.755.8351 5659

Fax: +86.755.8271 6024

E-mail: market@solars-china.com